

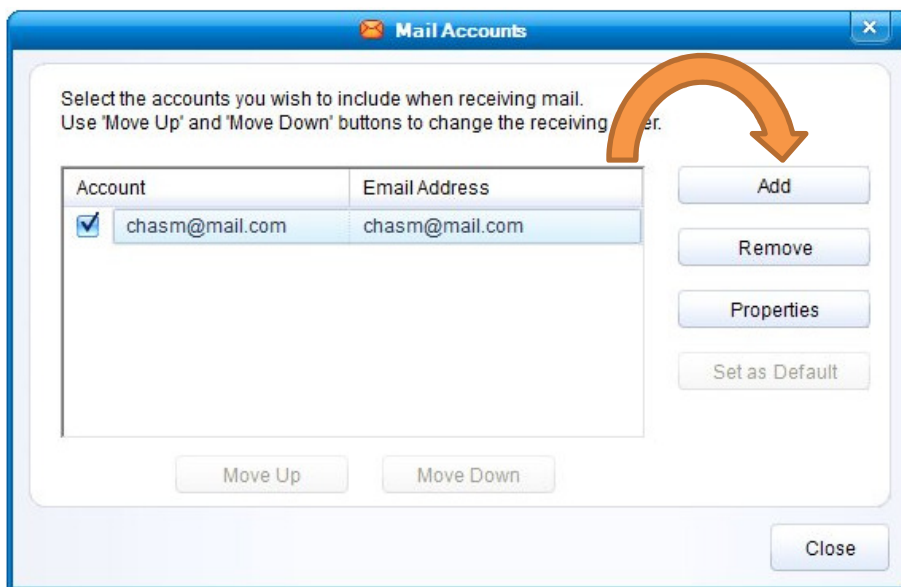
# IncrediMail Email Set-Up

Click Tools

Then Email Accounts



Click Add



Click Let me configure settings myself  
Click next



Click Other



*Enter your name, Full Email address and password  
Click Next*

IncrediMail Installation

Welcome to IncrediMail

Please enter your email address and password:

Your email address:  ←

For example: paul@isp.com

Your password:  ←

Cancel Back Next

*You will see this screen for a moment*

Account Wizard

Connect to your account

Online search for your server settings...

Please sit back and relax while IncrediMail attempts to automatically fill out the email server settings for you, using the email address that you provided.  
This process may take a moment or two.

If successful, the settings will be filled in on the next page.

If you prefer to fill out the server settings manually,  
please press "Skip" below at any time.

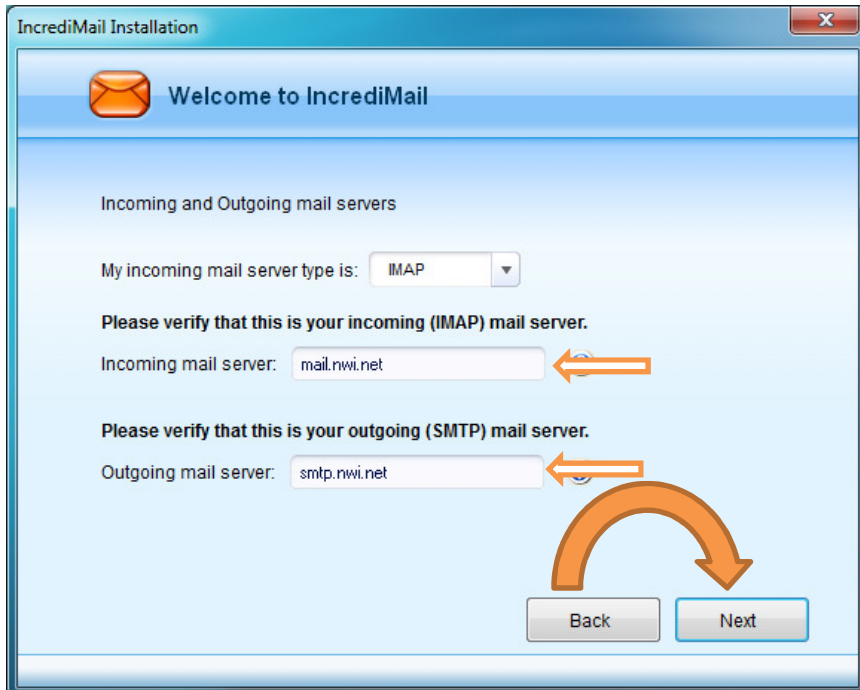
✖ Skip

Select IMAP

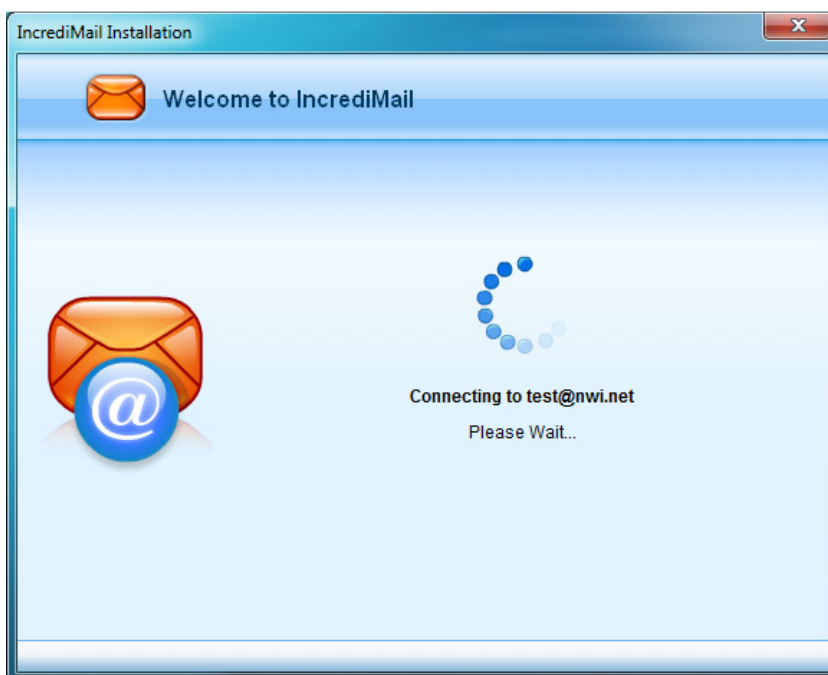
Enter mail.nwi.net as the Incoming mail server

Enter smtp.nwi.net as the Outgoing mail server

Click Next



You will see this screen for a moment



Uncheck the box next to Use IncrediMail's MyStart as my homepage  
Click finish



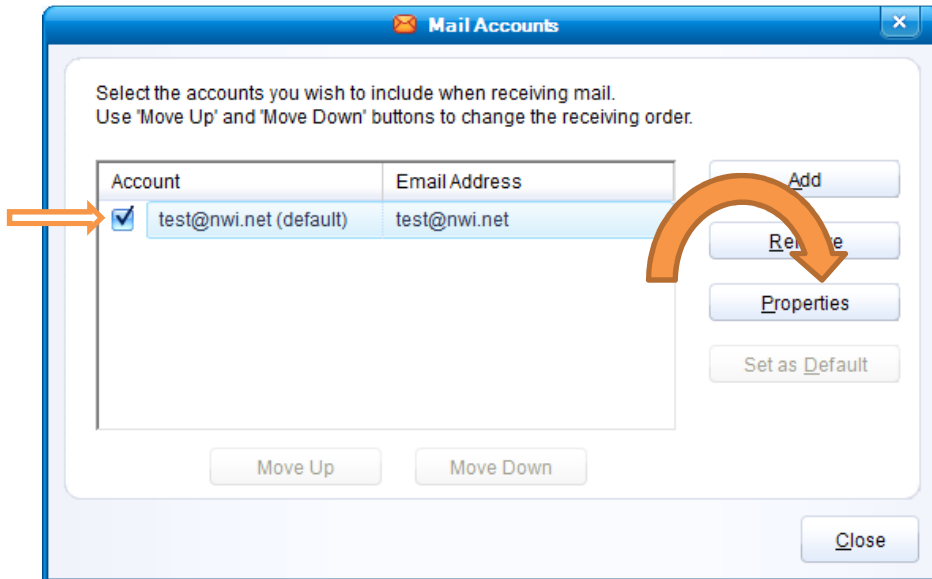
Now that we have our Email Account entered we need to modify a few settings.

Click Tools

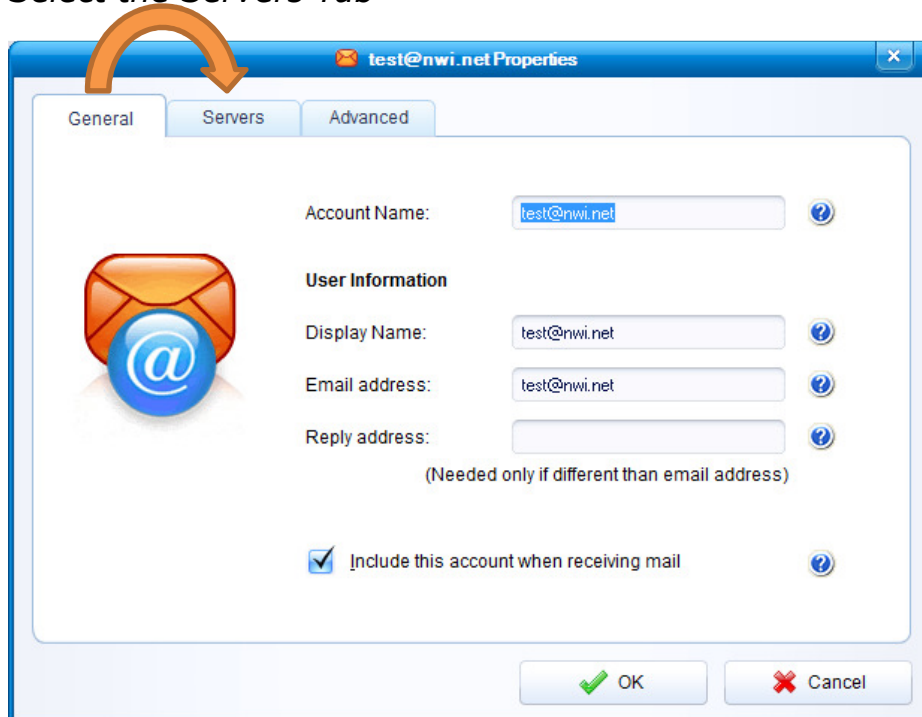
Then Email Accounts



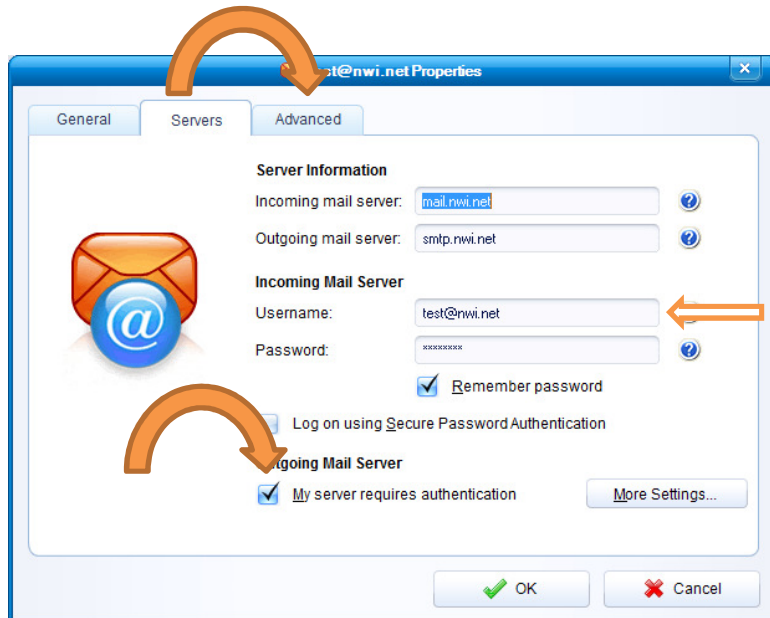
Select your email account  
Click Properties



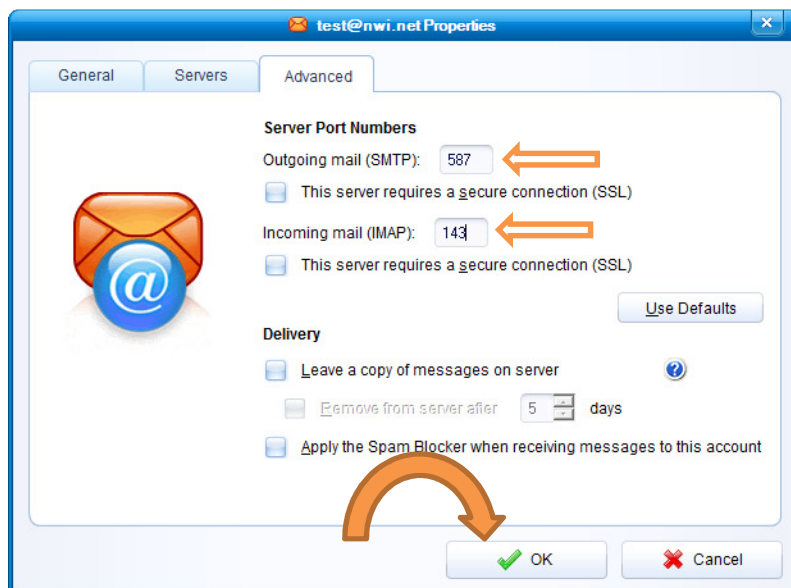
Select the Servers Tab



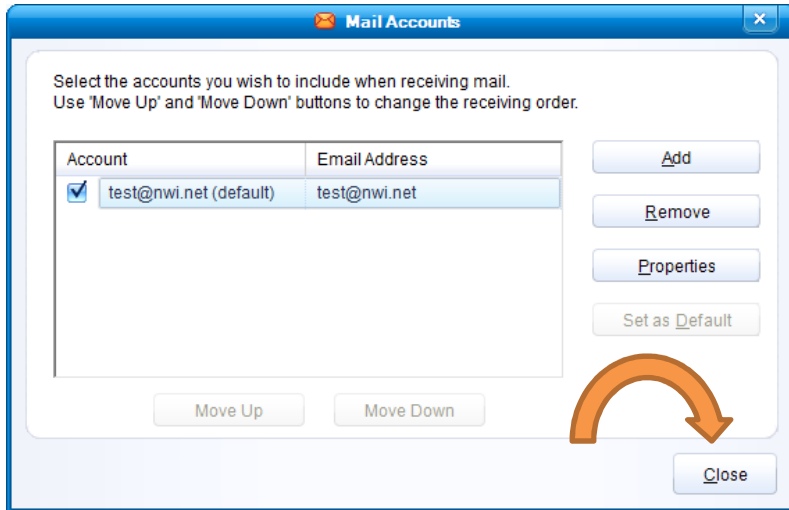
Enter your Full Email Address next to Username  
Check the box next to My server requires authentication.  
Then select the Advanced Tab



Change the Outgoing Mail (SMTP) To 587  
Change Incoming Mail (IMAP) to 143  
Click OK



*Click Close*



*You should now be able to send and receive Email!*