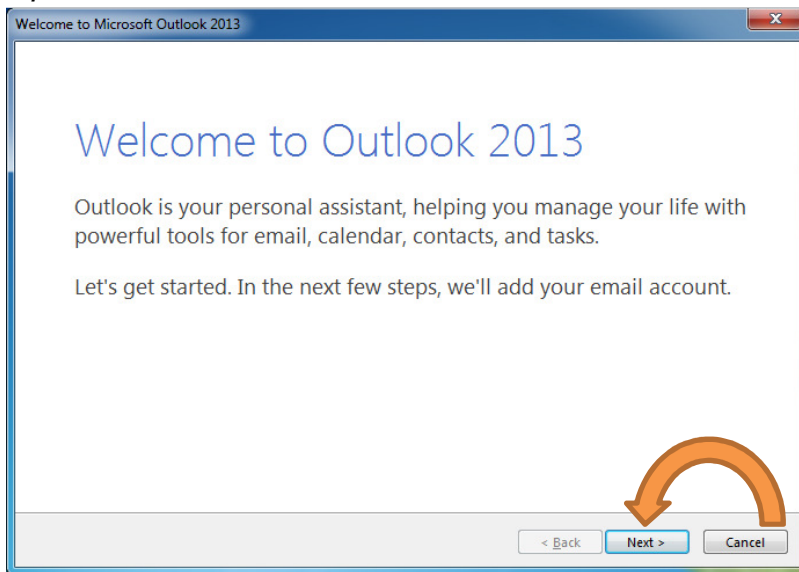
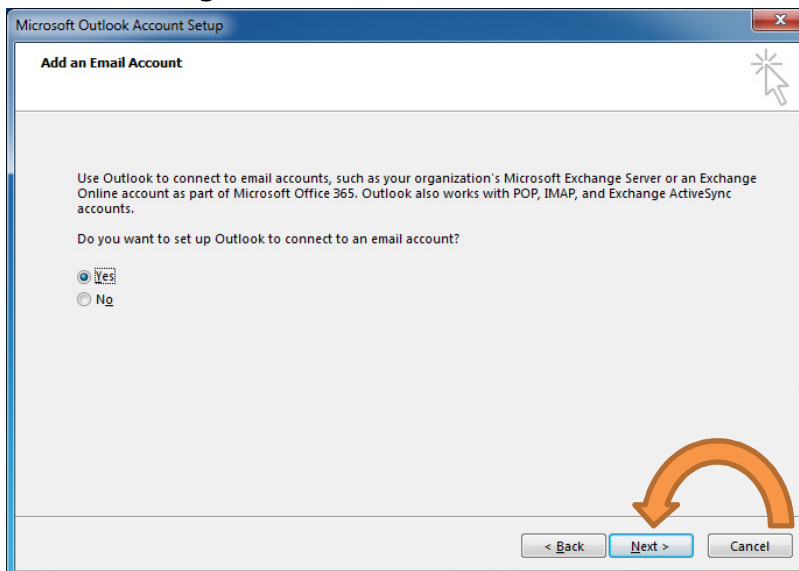


Outlook 2013 Email Setup

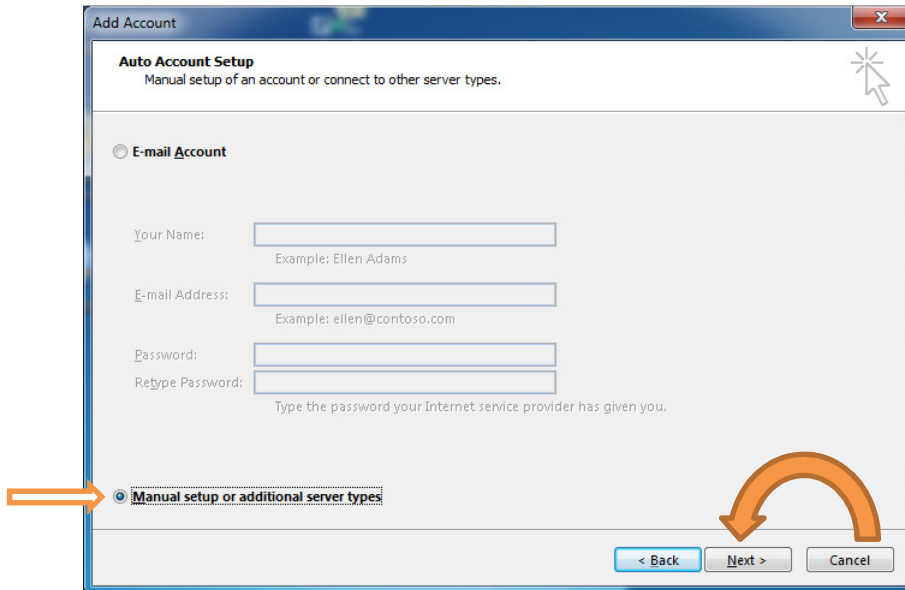
Open Outlook and click Next



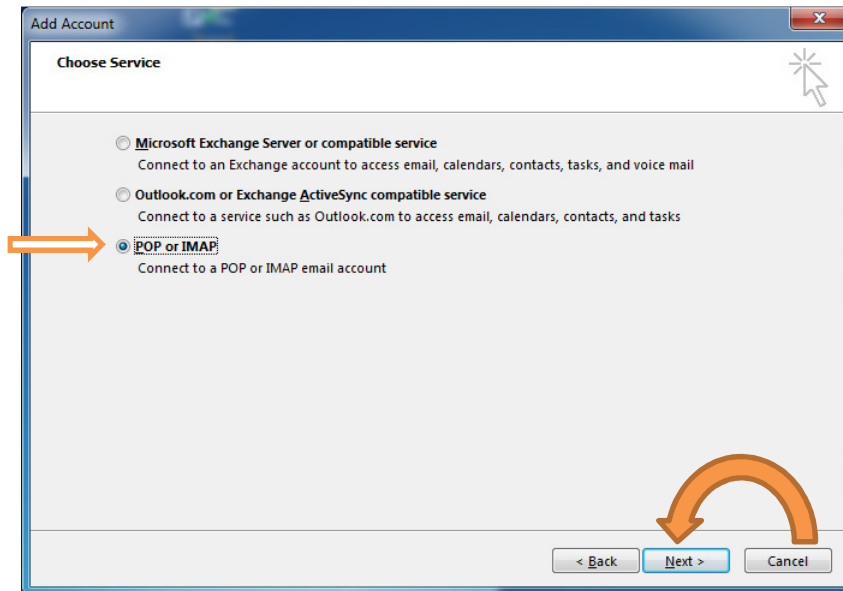
Click Next Again



Select Manual setup
Click Next



Select POP or IMAP
Click Next



Type your Name and email address

Change the Account Type to IMAP

Type mail.nwi.net in the field next to Incoming mail server

Type smtp.nwi.net in the field next to Outgoing mail server

Enter your Full Email address as your Username

Type in your Password and check the box next to Remember password

Click More Settings

POP and IMAP Account Settings
Enter the mail server settings for your account.

User Information

Your Name: LocalTest

Email Address: test@nwi.net

Mail to keep offline: All

Server Information

Account Type: IMAP

Incoming mail server: mail.nwi.net

Outgoing mail server (SMTP): smtp.nwi.net

Logon Information

User Name: test@nwi.net

Password: *****

Remember password

Require logon using Secure Password Authentication (SPA)

More Settings ...

< Back Next > Cancel

Click the Outgoing Server Tab

Check the box next to My outgoing server requires authentication

Make sure there is a dot next to Use same settings as incoming....

Internet E-mail Settings

General Outgoing Server Advanced

My outgoing server (SMTP) requires authentication

Use same settings as my incoming mail server

Log on using

User Name:

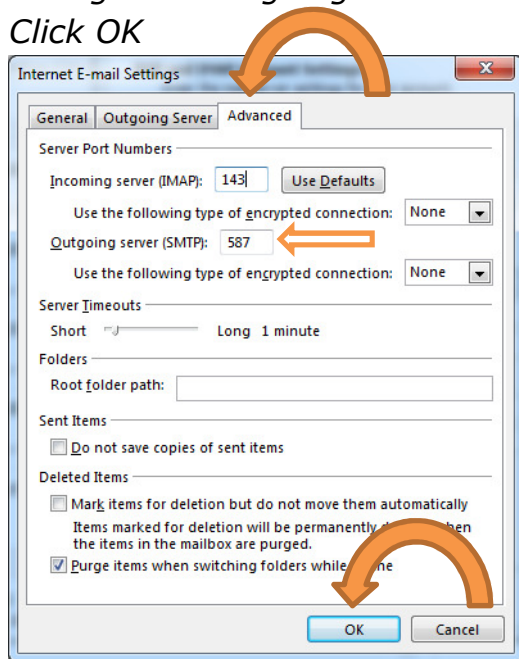
Password:

Remember password

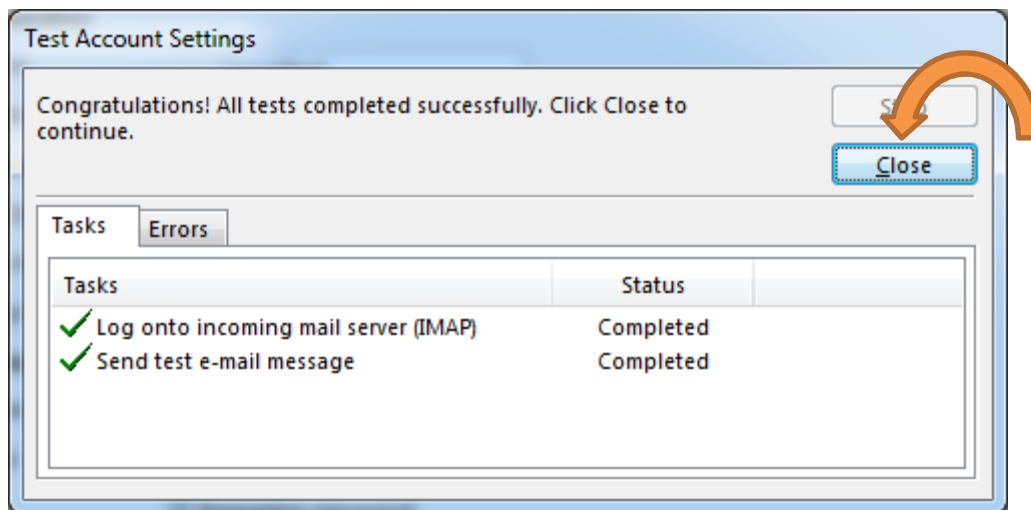
Require Secure Password Authentication (SPA)

OK Cancel

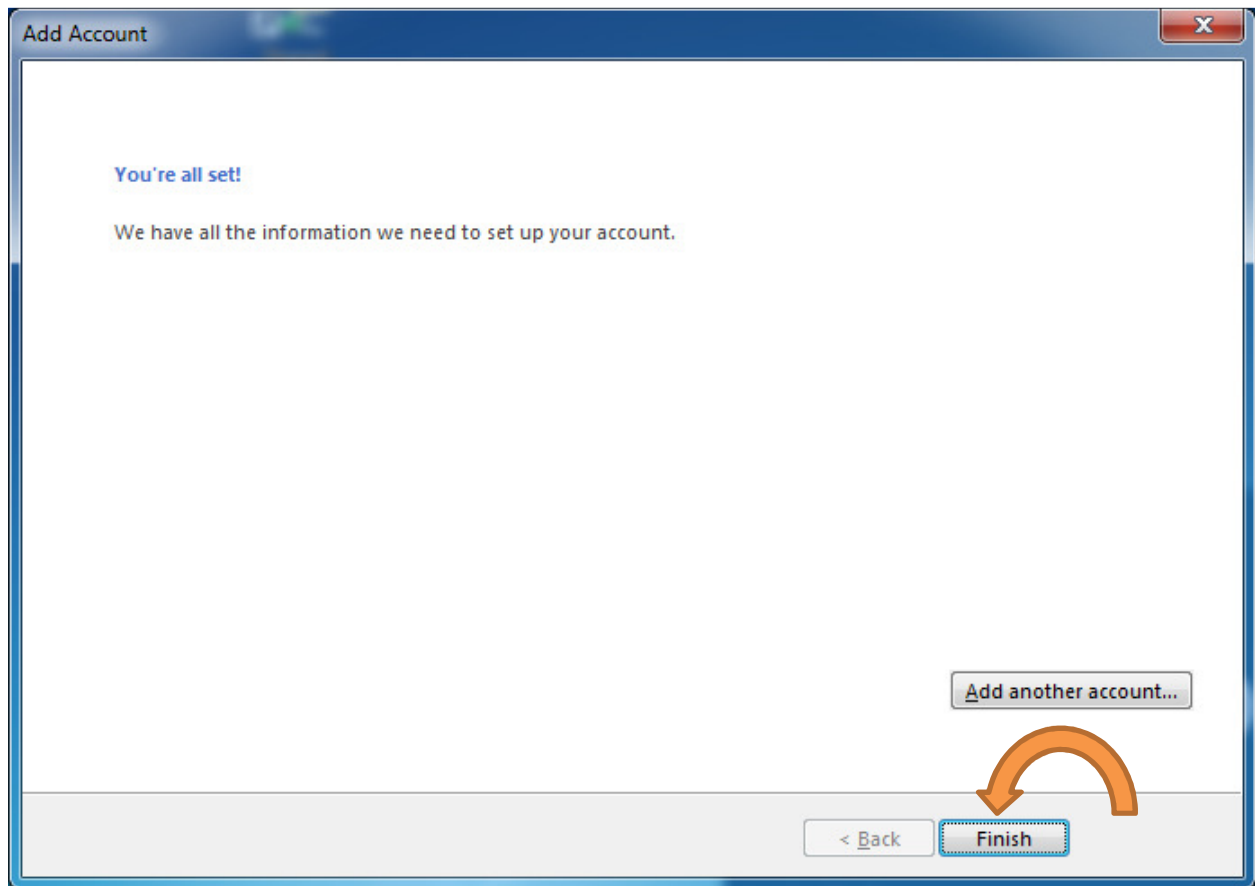
Click the Advanced Tab
Change the Outgoing server to 587
Click OK



Click Next
You should see the following screen
Click close



Click Finish



You should now be able to send and receive Email!