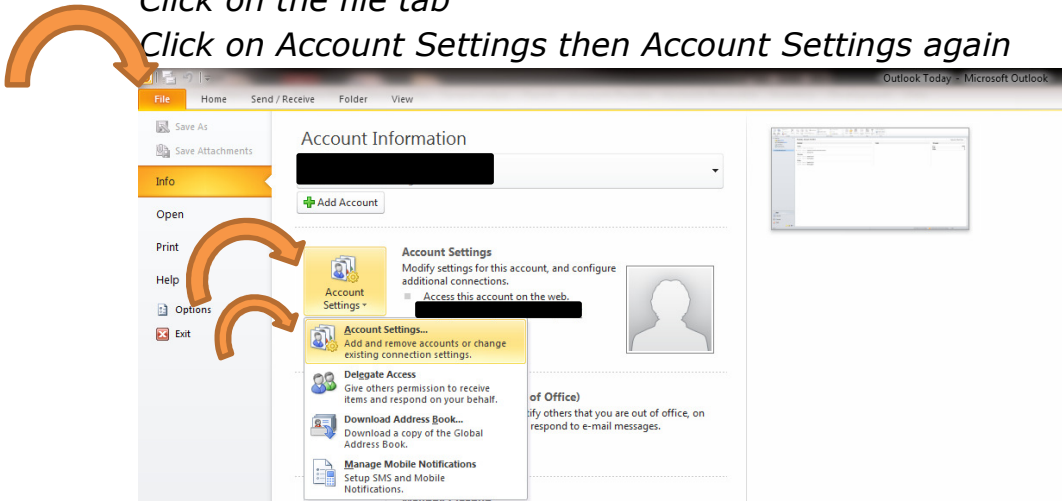


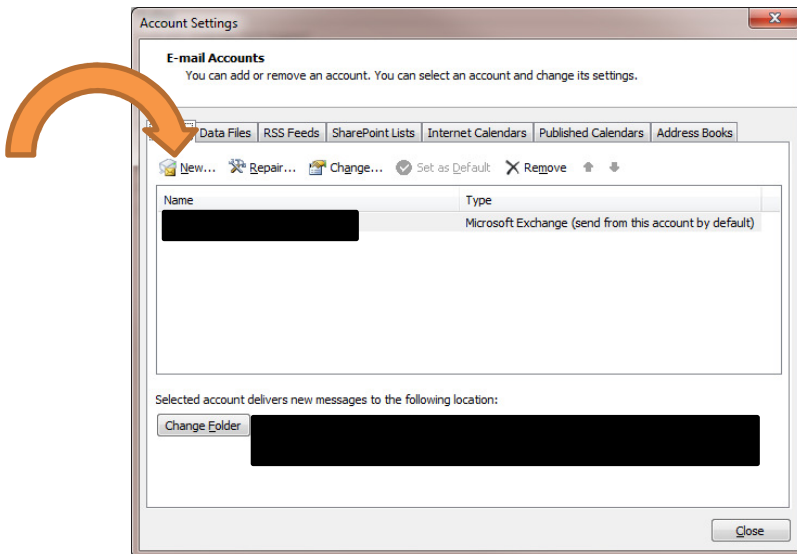
Outlook 2010 Email Set-up

Click on the file tab

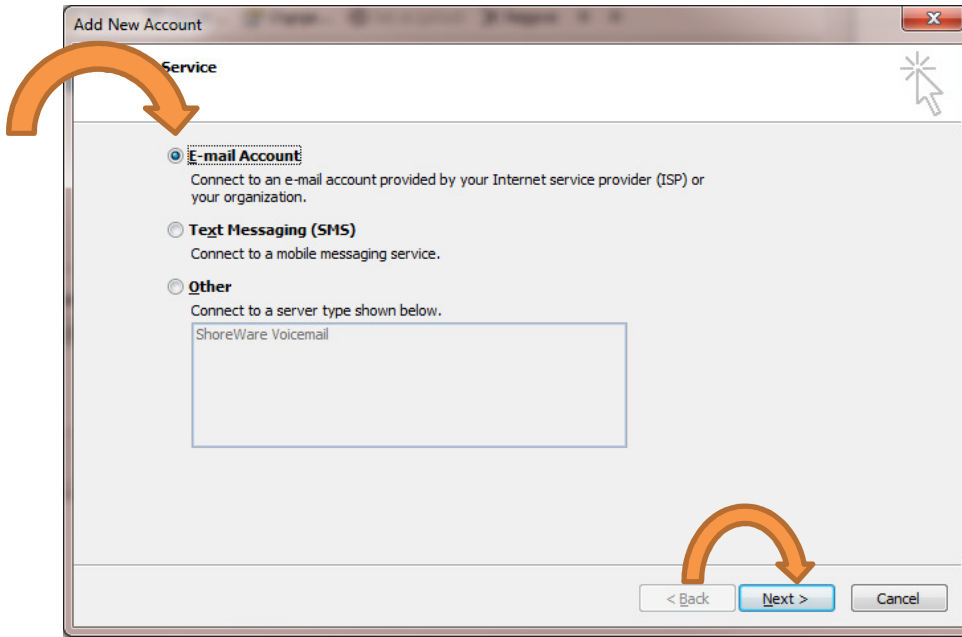
Click on Account Settings then Account Settings again



Click New

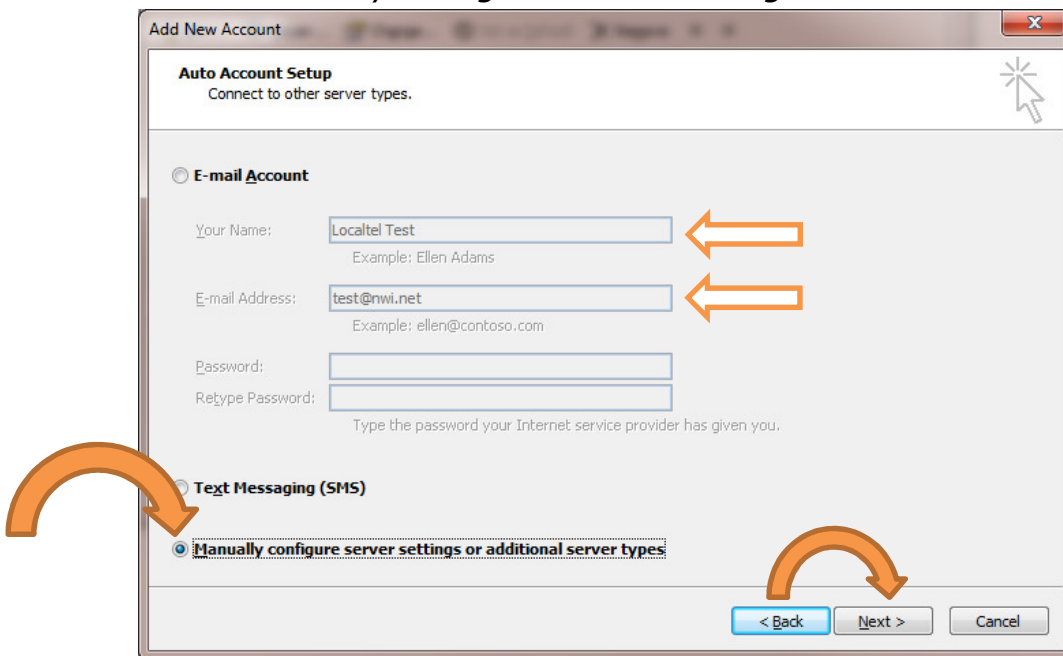


Select E-mail Account and click next

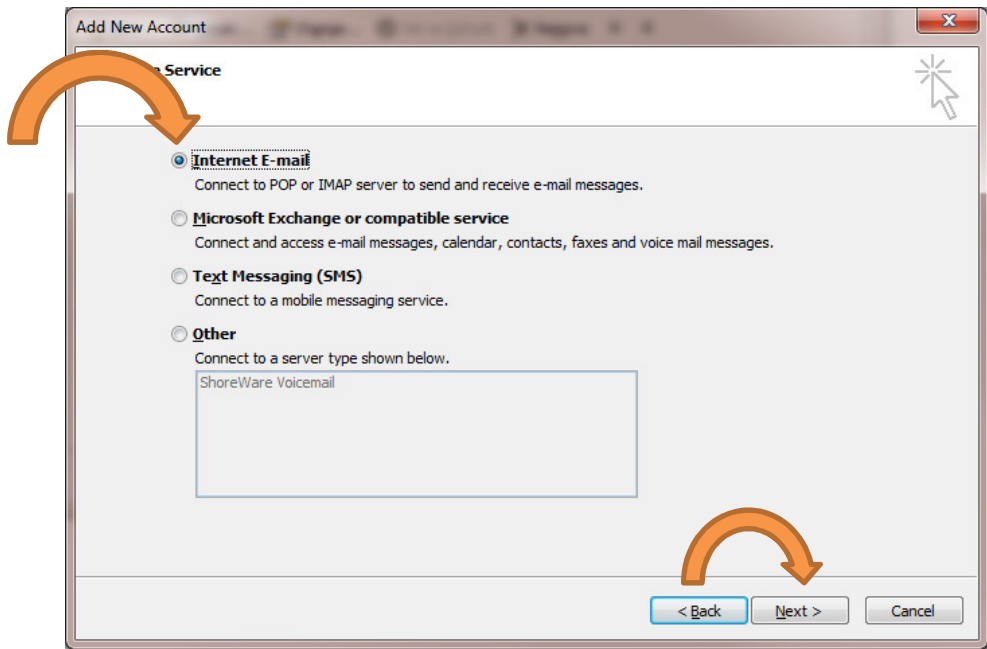


Enter your name and E-mail address

Select Manually configure server settings and click Next



Select Internet E-mail and click Next



Under Server Information:

Select IMAP as the Account Type

Enter mail.nwi.net as the Incoming mail server

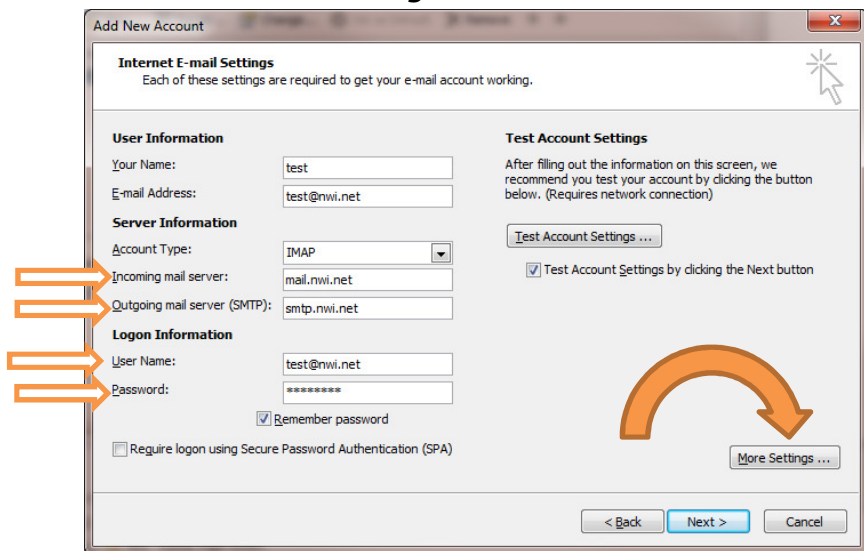
Enter smtp.nwi.net as the Outgoing mail server

Under Logon Information:

Enter your full email address as your username

Enter your password and click Remember password

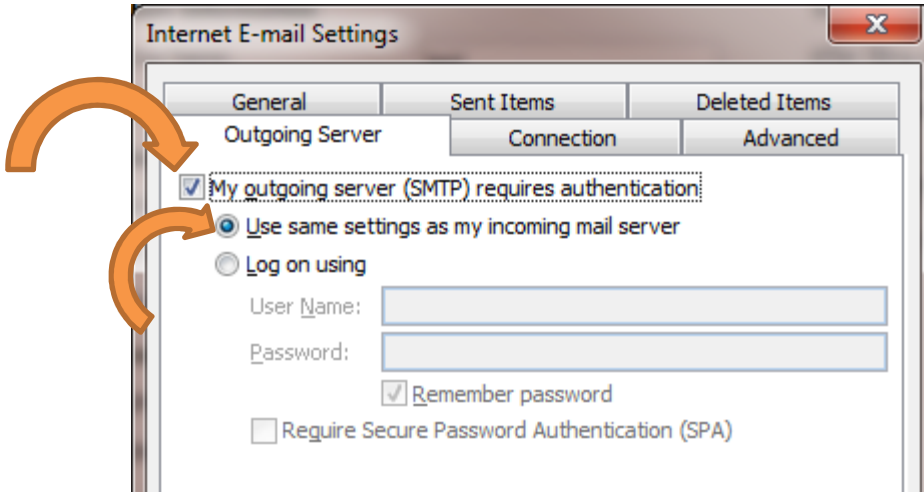
Click on More Settings



Select the Outgoing Server tab

Check the box next to: My outgoing server (SMTP) requires authentication

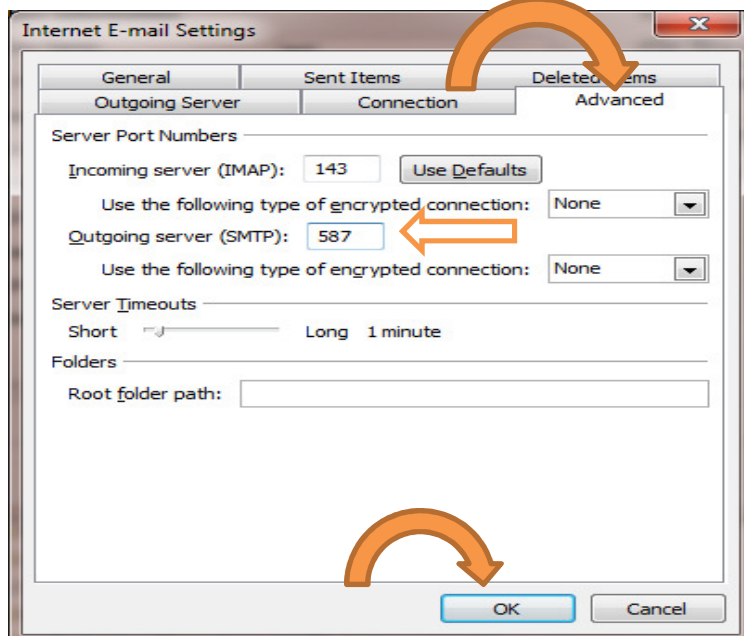
There should now be a dot next to: Use same setting as my incoming mail server



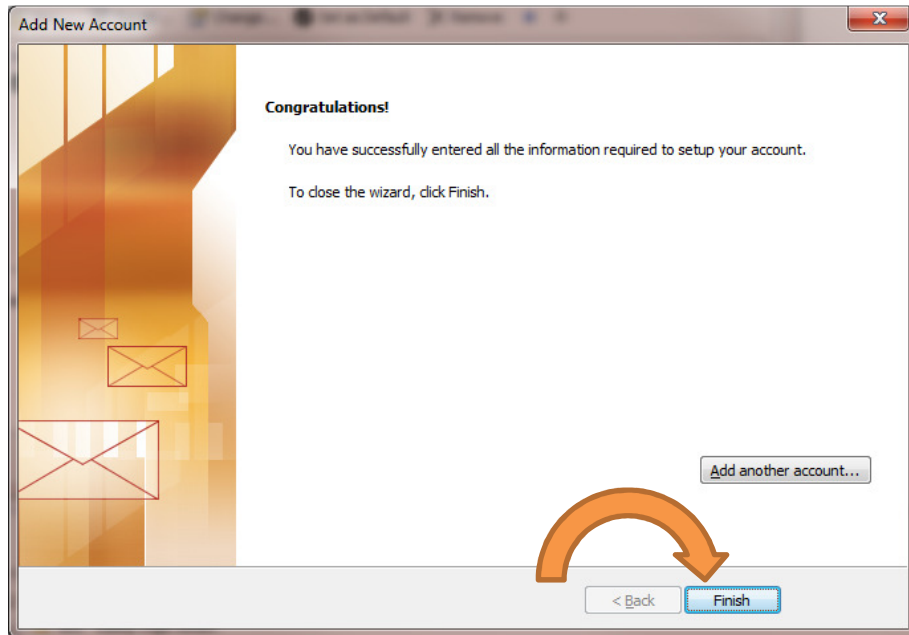
Click on the Advanced tab

Change the Outgoing server (SMTP) to 587

Click ok



*Click on next and you should get a page that says Congratulations!
Click Finish*



*Tap close on your account settings window
You should now be able to send and receive your E-mail!*